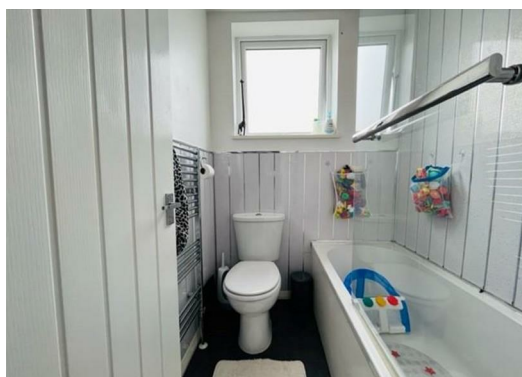
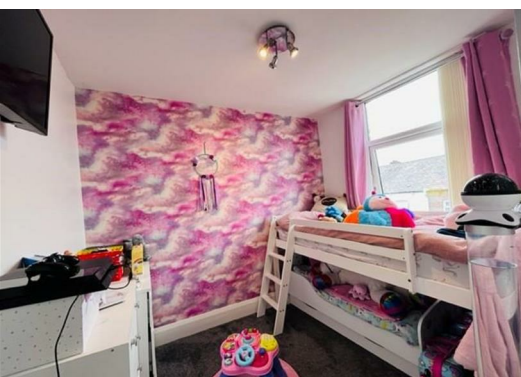




## **Tower Street, OL10 3AD £895 PCM**

A two-bedroom mid-terraced property in the popular area of Heywood. The property comprises; lounge, MODERN FITTED KITCHEN, one double bedroom and one single bedroom and a MODERN, three-piece bathroom suite with a SHOWER over the bath. The property benefits from neutral decor and neutral carpets, laminate flooring to the lounge, GCH, uPVC double glazing, and an enclosed rear yard. STREET PARKING to the front. MUST SEE!!





### Disclaimer:

These particulars, whilst believed to be accurate are set out as a general guideline and do not constitute any part of an offer or contract. Intending Tenants should not rely on them as statements of representation of fact, but must satisfy themselves by inspection or otherwise as to their accuracy. Please note that we have not tested any apparatus, equipment, fixtures, fittings or services including gas central heating and so cannot verify they are in working order. Although we try to ensure accuracy, if measurements are used in this listing, they may be approximate. Therefore if intending Tenants need accurate measurements to order carpeting or to ensure existing furniture will fit, they should take such measurements themselves. Photographs are reproduced general information and it must not be inferred that any item is included for let with the property.

Viewing:

Viewing strictly by appointment through Lifestyle Sales and Lettings. For further information please call 01706 823 131

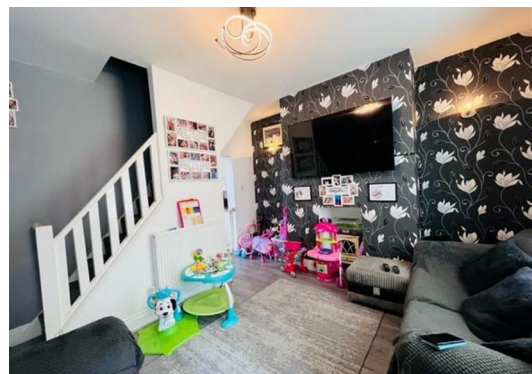
Energy Efficiency Rating			Environmental Impact (CO <sub>2</sub> ) Rating		
Very energy efficient - lower running costs			Very environmentally friendly - lower CO <sub>2</sub> emissions		
(92 plus) A			(92 plus) A		
(81-91) B			(81-91) B		
(69-80) C			(69-80) C		
(55-68) D			(55-68) D		
(39-54) E			(39-54) E		
(21-38) F			(21-38) F		
(1-20) G			(1-20) G		
Not energy efficient - higher running costs			Not environmentally friendly - higher CO <sub>2</sub> emissions		
England & Wales			England & Wales		
EU Directive 2002/91/EC			EU Directive 2002/91/EC		

Current			Potential		
63			87		

Current			Potential		
55			84		



Head Office: 121 Whalley Road, Ramsbottom, Lancashire, BL0 0DG

Telephone: 01706823131 Email: [enquiries@lifestylesalesandlettings.co.uk](mailto:enquiries@lifestylesalesandlettings.co.uk) Website: [www.lifestylesalesandlettings.co.uk](http://www.lifestylesalesandlettings.co.uk)